



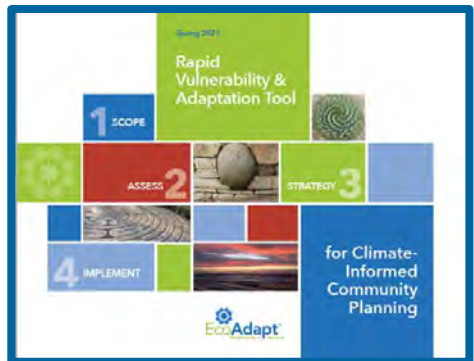
Including Climate Change in Planning & Beyond

Lara J. Hansen





How to use the tools presented in the workshop



Use the Rapid Vulnerability & Adaptation Tool (RVAT) to:

Evaluate overall vulnerability and develop adaptation options for:

- County Operations
- Topics
- Agencies

Identify Climate Vulnerabilities to the tasks being undertaken

Develop possible Solutions to reduce these Vulnerabilities

Evaluate Solutions to determine the most effective & feasible

Implement Solutions, monitor their efficacy, modify as needed.

Not just for your organization! Anyone, any organization or any coalition can use these to support climate savvy decision making

Make the RVAT part of daily planning processes to create climate-informed guiding documents

Use the Climate Change Adaptation Certification (CCAC) to:

Evaluate an individual decision or compare decisions such as:

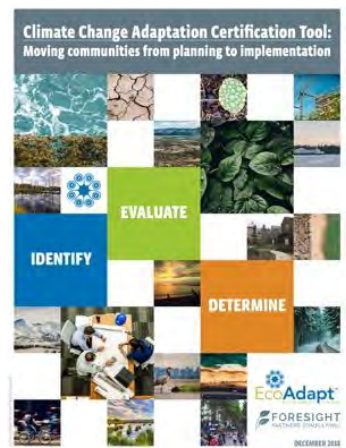
- Permits
- Capital Expenditures
- Policy change

Identify Climate Risk Factor for a specific decision/project

Evaluate climate impact on decision/project

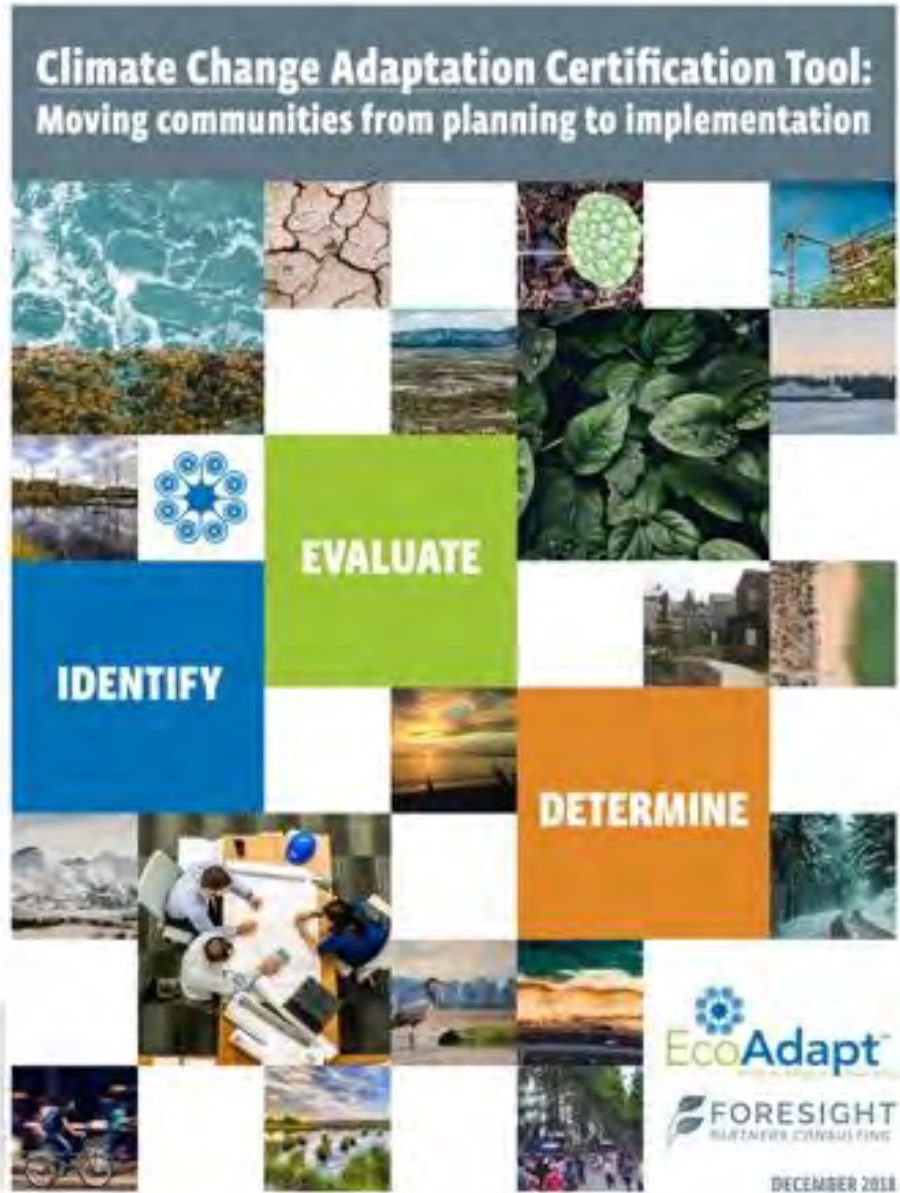
Make a determination of how to proceed

Make the CCAC part of daily planning processes to mainstream a climate lens in decision making



Homework

FOR EACH HOMEWORK SUBMITTED SUMMARIZE IN 2 sentences and share one thought on what is great or what needs to be considered. Have those things map to the approaches we are teaching



A sampling of CCAC homework



Dredging, widening & cleaning out a portion of the W. Lake Sugar Loaf Lake channel

- Planning in advance for higher water levels and less permeable soils in an area that is likely to be more developed to maintain floodplain function
- Great use of local mapping tools. What would be done to reduce the impact of “sprawl”? Clear designations? Zoning?

How climate change will impact the species of the bird taxa that use Ft. Custer Training Center

- Preserve & manage (fire) more regional floodplain land to provide bird habitat
- After your species vulnerability assessment, use this tool to evaluate the effectiveness of one specific action (e.g., a specific site you might acquire, a specific habitat restoration plan)

Redesign and restore a large arboretum pollinator garden within the next few years

- Use appropriate planting selections, plans for low-water use, and use of renewable energy.
- Great use of local site knowledge. Can non-motorized transit to the site be enhanced?

A sampling of CCAC homework



Public access system to a new nature preserve, includes parking lot, trails, benches, signage

- Maintain permeability and local water retention, mostly passive design.
- Consider how to ensure erosion protecting vegetation is maintained as conditions change

Create a greenway/bikeway along Portage Creek

- Addition of a vegetative buffer to help with flood control, plus creation of non-motorized transit route.
- Great opportunity add other flood control features in design. Consider possible role in water quality remediation?

Interior renovation of an existing building where Can-Do Kalamazoo plans to move in 2022

- Use appropriate planting selections, plans for low-water use, and use of renewable energy.
- Great use of local site knowledge. Can non-motorized transit to the site be incentivized?

Existing building—can energy and water efficiency be improved to limit future costs & impact?

Other Resources at your disposal



The **Kalamazoo Climate Crisis Coalition** mobilizes collective action to achieve immediate & drastic reductions in greenhouse gas emissions through a just transition.



The screenshot shows the CAKE Resources website interface. The search bar contains 'michigan' and the results are filtered to show documents. The results include:

- Michigan Climate Action Council Plan
- Michigan Climate and Health Profile Report: Building Resilience Against Climate Effects on Michigan's Health
- Michigan Hazard Mitigation Plan (Updated April 2019 edition)
- Michigan Climate and Health Adaptation Program (MICHAP) Strategic Plan Update: 2016-2021
- Michigan Tribal Climate Change Vulnerability Assessment and Adaptation Planning: Project
- Changing Climate, Changing Wildlife: A Vulnerability Assessment of 400 Species of Michigan

The right sidebar shows filters for Resource Type (Document: 24, Case Study: 7), Scale (Community / Local: 12, State / Provincial: 8, Tribal / First Nation: 3, Regional / Subnational: 2, Multilateral / Transboundary: 1), Sector Addressed (Public Health: 8, Land Use Planning: 6, Policy: 6, Water Resources: 10, Conservation / Restoration: 6, Culture/communities: 5, Wildlife: 5, Disaster Risk Management: 3, Forestry: 3, Agriculture: 2), and Target Climate Changes and Impacts (Air Temperature: 12, Precipitation: 12, Storms Or Extreme Weather Events: 10, Public Health Risks: 9, Flooding: 7, Water Temperature: 6, Flow Patterns: 5).



Your online adaptation destination

Find case studies, tools, guides and peers.

Searchable by geography, sector, climate hazard and much more